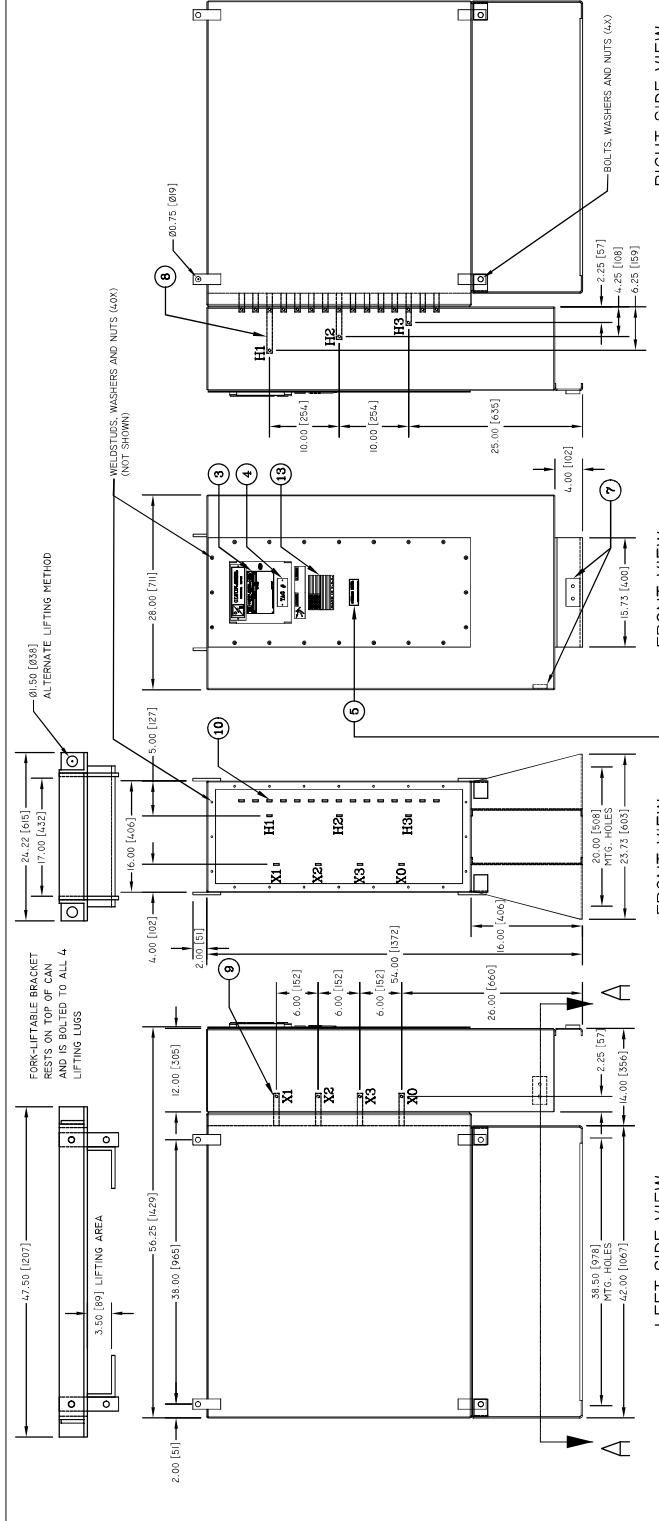


ITEM	DESCRIPTION
1	COPPER WOUND, EPOXY RESIN ENCAPSULATED TRANSFORMER (SIL PAC)
2	180°C INSULATION CLASS
3	316 STAINLESS STEEL NAMEPLATE - 6.125 [156] X 3.875 [98]
4	316 STAINLESS STEEL TAG NAMEPLATE (REFER TO TAG DRAWING AS REQUESTED)
5	CSA LABEL (SEE DETAILS)
6	13.5 [343] X 35.5 [902] CUTOUT ACCESS BEHIND BOLTED COVER WITH NEOPRENE GASKET
7	EXTERNAL 8 INTERNAL, 50-13 GROUNDPADS (WELDED TO ENCLOSURE)
8	HV TERMINAL (SEE DETAILS) OFFSET 2" ON DEPTH
9	LV TERMINAL (SEE DETAIL)
10	HV TAP TERMINALS (SEE DETAIL) - #8 SIL JUMPERS W/ COMPRESSION LUGS
11	LIFTING LUGS
12	CONDUIT ACCESS (BOTH SIDES AND/OR THROUGH BOTTOM)
13	MADE IN U.S.A.
SPECIFICATIONS	
A	NEMA 3RX 316 STAINLESS STEEL ENCLOSURE WITH ANSI 61 POWDER COAT FINISH
B	MANUFACTURED IN ACCORDANCE WITH APPLICABLE NEMA ST-20 AND APPLICABLE ANSI/IEEE C57.12.0 STANDARDS
C	SUITABLE FOR 50 DEGREE C MAX AMBIENT
D	DESIGN IMPEDANCE: 1.5%
E	DYN VECTOR GROUP
F	ESTIMATED NO LOAD LOSSES: 725W ESTIMATED TOTAL LOSSES: 2055W
G	ESTIMATED EFFICIENCY @ FULL LOAD: 98.65%
H	SPECIAL SHIPPING PROVISIONS, SEE SHEET 2



OLSUNElectrics
 www.olsun.com
 800.336.5786

KVA	150	3 PHASE	HERTZ	60	RIZ	10	IC RISE	115
HV	13.5 kV	LV	480V	AMP	180	WTG.	3.50	US
LV	1	480V/277	10	KV	AMP	180	NO.	A74308

50Y TYPE TRANSFORMER CLASS GA

POLARITY

HIGH VOLTAGE: H1, H2, H3
 LOW VOLTAGE: X1, X2, X3

SUITABLE FOR 50°C MAX AMBIENT
 DE-ENERGIZE TRANSFORMER BEFORE CHANGING TAPS

NAMEPLATE DRAWING

REV/A - AIDED HARDWARE BETWEEN BASE & TRANSFORMER SECTION - 05/14/24 B.P.
 REV/B - AIDED SPEC H AND SHEET 2 - 05/20/24 B.P.
 REV/C - REVISED NOTES, HV TERM. WAS 125V/650 PER S022229 - 11/22/19 B.P.
 REV/D - AIDED ATC SECTION AND OTHER CHANGES PER S022229 - 11/22/19 B.P.

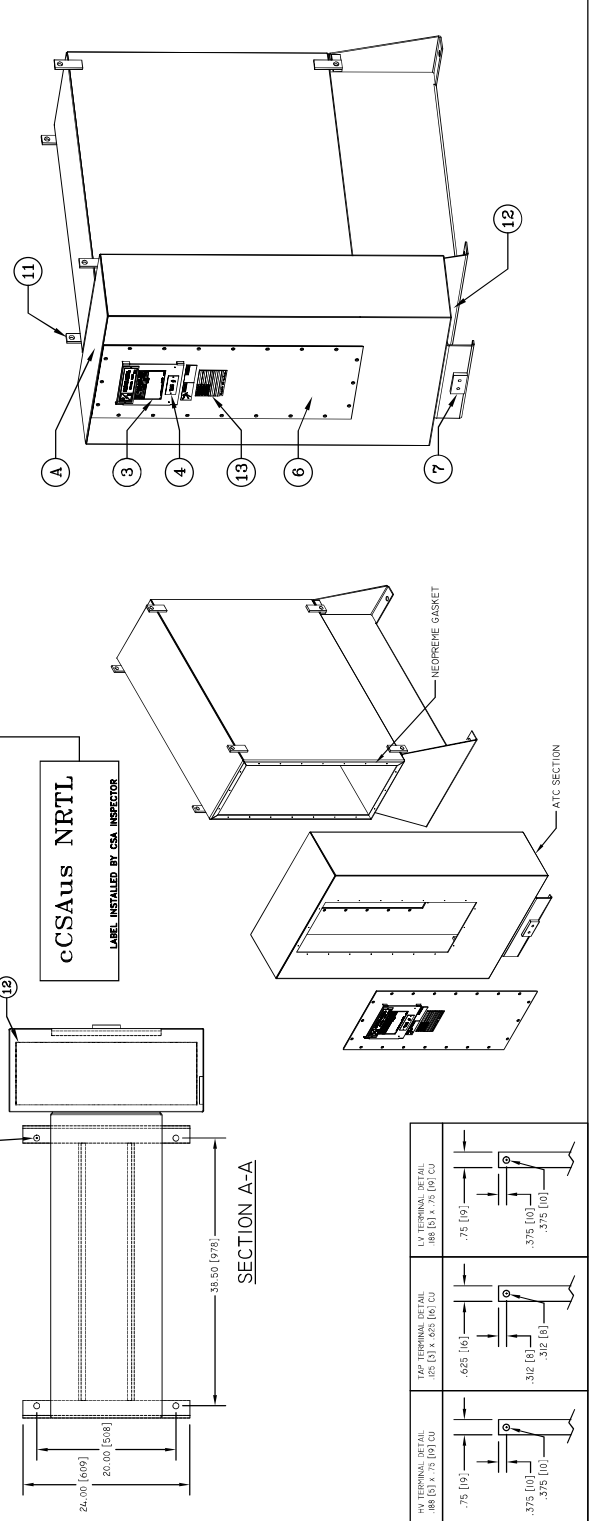
OLSUNElectrics
 www.olsun.com
 800.336.5786

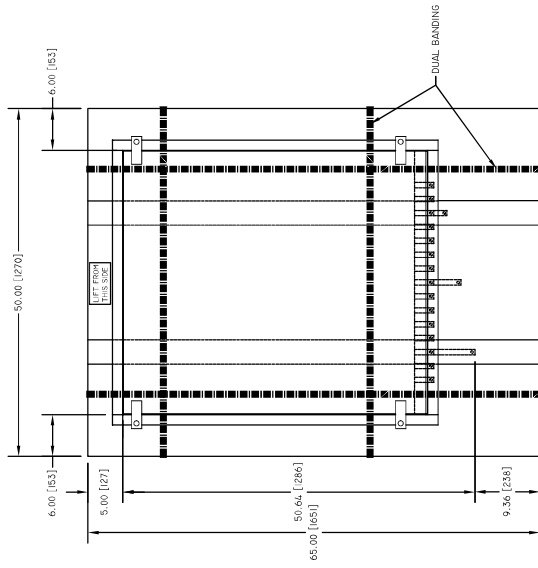
REVISIONS: 04
 APPROVED BY: ANK
 DATE: 10/02/2008

DRAWN BY: B.P.
 DATE: 10/02/2008

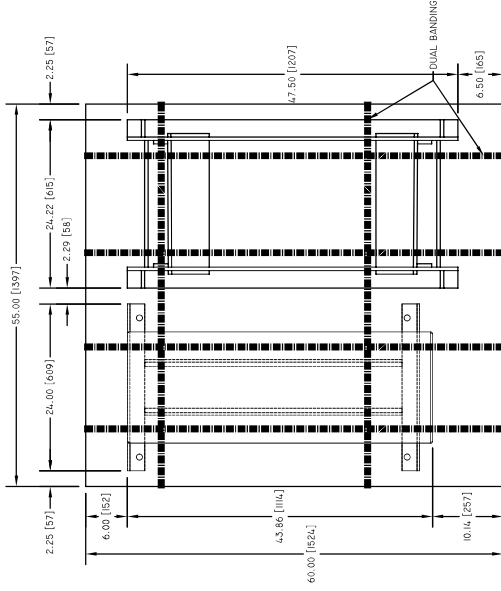
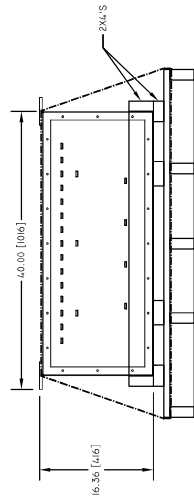
DRAWING TITLE: 051225 SIL PAC ENCLOSURE
 DIMENSIONS IN INCHES (MM)
 TOLERANCES:
 TWO DECIMAL +/- .01
 ONE DECIMAL +/- .02
 THREE DECIMAL +/- .005

DRAWING NUMBER: A74308-57/80-FORKLIFTABLE

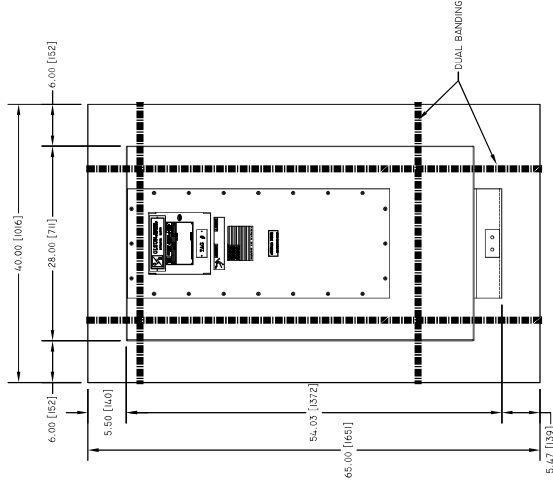
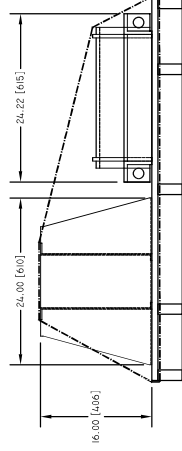




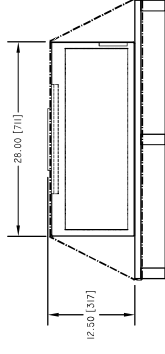
TRANSFORMER SKID




BASE & LIFT PROVISION SKID



ATC SECTION SKID



ITEM	TRANSFORMER SECTION
1	6" X 50" X 65" SKID
2	(2) 2x4'S FLAT TO LAY TRANSFORMER ON. THEN 2x4'S ALL AROUND TO HOLD TRANSFORMER IN PLACE ON SKID WITH DUAL BANDING AND GRATE
3	LABEL 'LIFT FROM THIS SIDE'
4	TERMINALS TO BE PROTECTED WITH BUBBLE WRAP AND CARDBOARD ALL AROUND
5	BOLT-ON 4x4'S FOR CRANE OFF-LOADING
BASE AND LIFT PROVISION SECTION	
6	6" X 62" X 60" SKID
7	HEIGHT WILL BE APPROX. 28" TALL WITH GRATE
8	2x4'S ALL AROUND WITH DUAL BANDING
ATC SECTION	
9	6" X 40" X 65" SKID
10	CARBONADO/PLASTIC. THEN SET ATC ON SKID WITH HARDWARE BOX
11	HEIGHT WITH GRATE WILL BE APPROX. 28"
12	2x4'S ALL AROUND ATC WITH DUAL BANDING
ALL SKID SECTIONS	
13	SHOCKWAVE STICKER APPLIED TO EACH PALLET
14	ORANGE 'NO STACK' HAT AND 'DO NOT STACK' TAPE TO BE APPLIED TO EACH PALLET
15	PALLETS TO BE LIFTED BY MINIMUM 5000 LB. FORK TRUCK

REVISION - ADDED NOTES 13-15, SHOW BANDING - 05/14/24 B.P
 REVIS - ADDED SPEC # AND SHEET 2 - 05/13/24 B.P

 RICHMOND, ILLINOIS
 TEL. 800.336.5786
 WWW.OLSUM.COM
 DRAWN BY: B.P
 DATE: 05/13/2024
 REVISIONS: 04
 APPROVED BY: KO
 DIMENSIONS IN INCHES (MM)
 TOLERANCES:
 FINE DECIMAL +/- .015
 TWO DECIMAL +/- .025
 THREE DECIMAL +/- .005
 DRAWING TITLE: 051225 SIL PAC ENCLOSURE
 DRAWING NUMBER: A74308-5780-FORKLIFTABLE